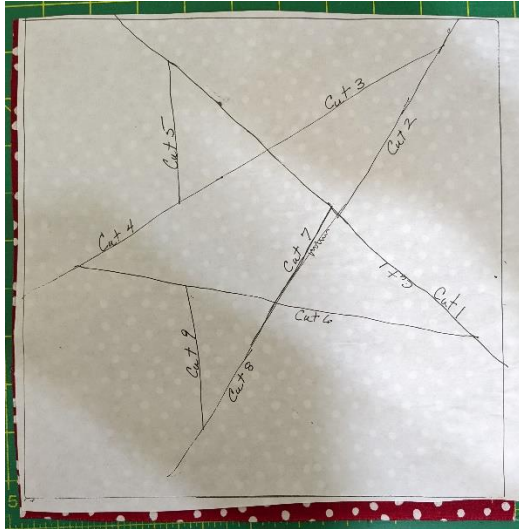


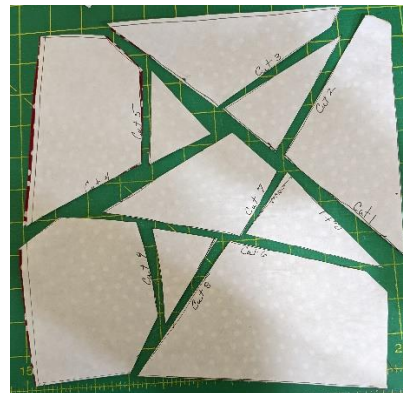
QOV BOM Month 2 August

Cut at least three 10 ½ inch squares of different colors. Cut four 2 ½ inch x 10 1/2-inch rectangles of coordinating fabric for each square. Print the two parts of the master copy. Cut on the dotted line and tape the two pieces together. Make sure it is a 10-inch square. If it is not quite 10 inches, then just extend your lines out past the edges and cut to the edge of the fabric.



1. Trace your master copy onto freezer paper. Do not cut apart the master copy. You will need it intact for assembly instructions.
2. Stack at least three 10" squares of different colors RIGHT SIDES UP. You may do up to 8 if you can comfortably cut that many layers.
3. Iron your freezer paper to the top of the stack.

4. Cut the pieces apart in the order written on the pattern. Use a ruler as you cut for straight edges.





5. Notice that star pieces are even numbers and background pieces are odd numbers. Take the top piece of each background and put it on the bottom of its stack. Notice in the picture piece #9 peeking out.



6. Sew piece #2 to piece #3 all the way through your stack. Match at the dot and don't worry about the outer edges. Press seams toward the background or press open.

7. Being sure you keep your stack in order, next sew piece #1 to your #2-#3 combo. Notice piece #1 matches #3. It's a check to be sure you are in order- all the background pieces should be the same color in each star. All the star pieces should be the same color. Always start at the dot marked on your master pattern, and don't worry about the outer edge. Set this section back in position.



8. Sew piece #4 to #5. Match at the dot.

9. Sew #6 to #7 then add #10, being sure you start at the dot.



10. Sew #8 to #9.

11. Once the sections are sewn, lay the stars out separately.



12. Sew the 8-9 unit to the 6-7-10 unit, MATCHING THE STAR SEAM. Don't worry about the end sticking out. Trim if you like.





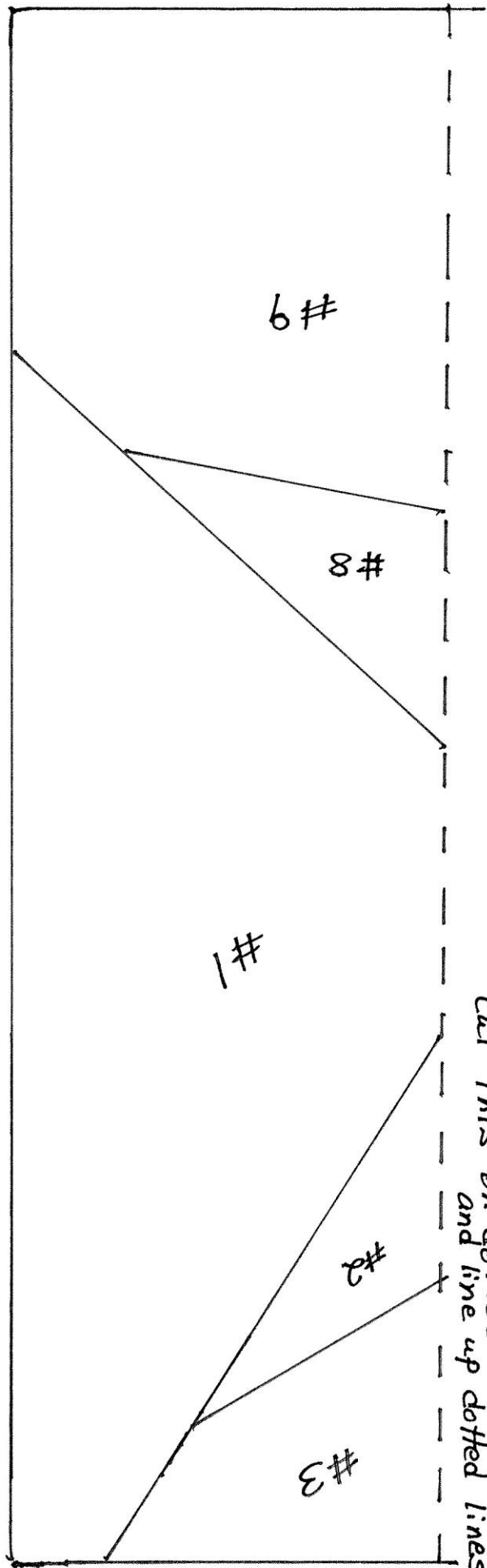
14. Sew the 1-2-3 piece to the rest, matching the star seams as closely as possible.

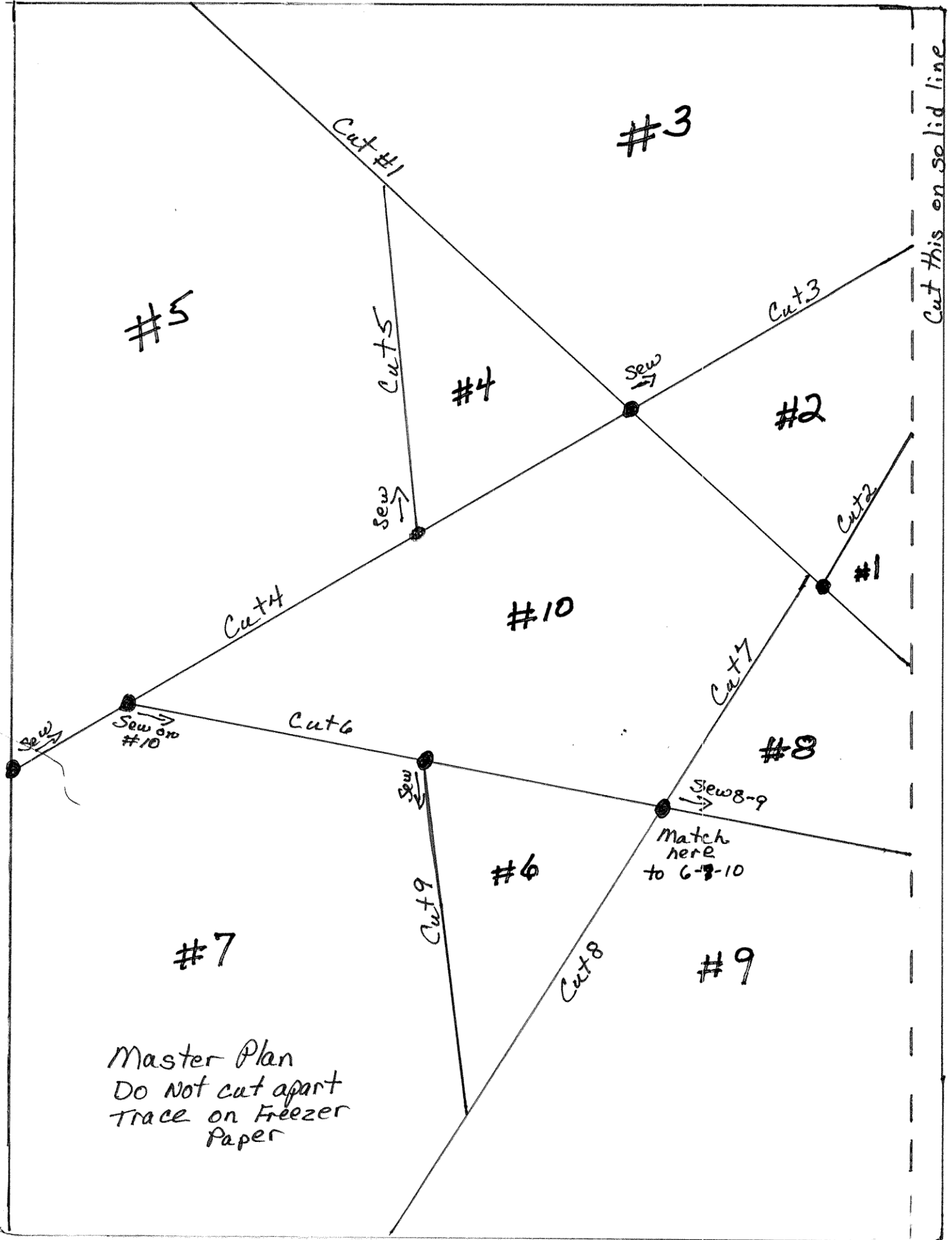
13. Sew the 4-5 section to the 6-7-8-9-10 unit, this time matching the outer edge.



15. Trim to an 8 1/2-inch square. Sew 4 coordinating 2 1/2 inch x 10 1/2 inch strips around the outer edges and you have more 12 1/2 inch squares for your QOV.







Master Plan
 Do not cut apart
 Trace on Freezer
 Paper